

Edgelow St between Gordon Head Rd and Dawnview Cres (west)

November 23, 2020 To November 27, 2020



The data presented here is for information purposes only and should not be considered authoritative for construction, geotechnical, engineering, navigational, legal, or other site-specific uses. The information shared is owned by the Transportation Division of the Engineering Department at the District of Saanich. Accuracy is not guaranteed.

Start Date: 23-Nov-20
 Start Time: 17:00
 Station ID: C0021-01

Location 1: Edgelow St between Gordon Head Rd and Dawnview Cres (west)

Note:

DATE:	November 23, 2020		November 24, 2020		November 25, 2020		November 26, 2020		November 27, 2020		WK AVG		WK AVG	HOURLY
	MON		TUE		WED		THURS		FRI		EB	WB	CH 1+2	%
Time:	EB	WB	EB	WB	EB	WB	EB	WB	EB	WB	EB	WB		
12-1 AM			6	5	9	6	10	10			8	7	15	0.6%
1-2 AM			0	1	3	3	3	2			2	2	4	0.2%
2-3 AM			4	3	2	2	2	1			3	2	5	0.2%
3-4 AM			2	1	0	1	2	3			1	2	3	0.1%
4-5 AM			1	1	2	0	4	0			2	0	3	0.1%
5-6 AM			4	8	2	5	4	7			3	7	10	0.4%
6-7 AM			10	21	12	20	16	22			13	21	34	1.4%
7-8 AM			76	88	74	92	78	77			76	86	162	6.6%
8-9 AM			148	169	143	177	146	190			146	179	324	13.2%
9-10 AM			50	52	50	55	53	69			51	59	110	4.4%
10-11 AM			70	67	48	53	54	62			57	61	118	4.8%
11-12 PM			76	72	64	63	59	56			66	64	130	5.3%
12-1 PM			84	66	82	58	66	74			77	66	143	5.8%
1-2 PM			73	72	62	88	70	88			68	83	151	6.1%
2-3 PM			137	120	136	131	138	130			137	127	264	10.7%
3-4 PM			111	149	99	115	119	124			110	129	239	9.7%
4-5 PM			89	100	106	111	114	109			103	107	210	8.5%
5-6 PM	91	65	94	56	91	61	94	66			93	62	155	6.3%
6-7 PM	62	51	63	43	68	56	52	38			61	47	108	4.4%
7-8 PM	51	39	53	48	49	30	50	38			51	39	90	3.6%
8-9 PM	46	38	35	35	44	32	29	29			39	34	72	2.9%
9-10 PM	22	16	27	21	33	20	30	27			28	21	49	2.0%
10-11 PM	17	16	24	15	19	22	24	28			21	20	41	1.7%
11-12 AM	13	11	21	14	14	6	20	10			17	10	27	1.1%
LANES			1258	1227	1212	1207	1237	1260			1233	1232	2466	100.0%
TOTAL			2485		2419		2497				2470			
	MON		TUE		WED		THURS		FRI		WK AVG			

PEAK HOUR					TOTAL VEHICALS-PEAK PERIODS		2 HOUR PEAK INTERVALS				
MAX. 7 - 9 am PEAK HOUR	324	⇒	13.2%	between 8-9 AM	1124	⇒	6 HR TOTAL	2 HR AM (7 - 9 AM)			
MAX. 7 - 11 am PEAK HOUR	324	⇒	13.2%	between 8-9 AM	850	⇒	4 HR TOTAL	VEH / HR	VEH / 2HR	2 HR %	
MAX. 11 am - 1 pm PEAK HOUR	143	⇒	5.8%	between 12-1 PM				7-8 AM	162	486	19.7%
MAX. 11 am - 3 pm PEAK HOUR	264	⇒	10.7%	between 2-3 PM				8-9 AM	324		
MAX. 4 - 6 pm PEAK HOUR	210	⇒	8.5%	between 4-5 PM				2 HR NOON (11 - 1 PM)			
MAX. 3 - 6 pm PEAK HOUR	239	⇒	9.7%	between 3-4 PM				VEH / HR	VEH / 2HR	2 HR %	
								11-12 PM	130	273	11.1%
								12-1 PM	143		
								2 HR PM (4 - 6 PM)			
								VEH / HR	VEH / 2HR	2 HR %	
								4-5 PM	210	364	14.8%
								5-6 PM	155		

Edgelow St between Gordon Head Rd and Dawnview Cres (west)

Westbound

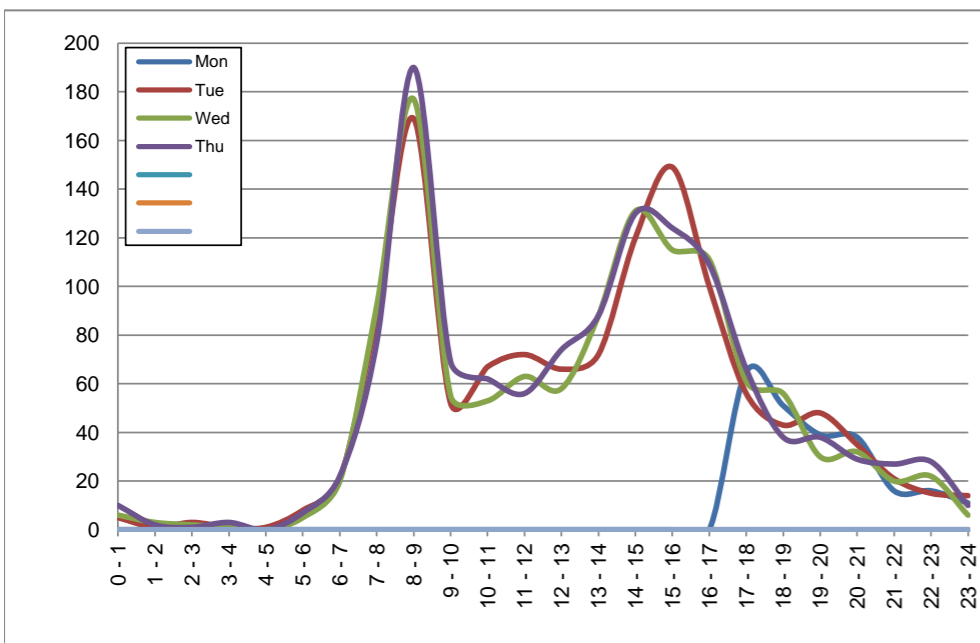
November 23, 2020 to November 26, 2020

Hourly Volumes

Time Period	Mon	Tue	Wed	Thu			
	Nov 23	Nov 24	Nov 25	Nov 26			
0 - 1		5	6	10			
1 - 2		1	3	2			
2 - 3		3	2	1			
3 - 4		1	1	3			
4 - 5		1	0	0			
5 - 6		8	5	7			
6 - 7		21	20	22			
7 - 8		88	92	77			
8 - 9		169	177	190			
9 - 10		52	55	69			
10 - 11		67	53	62			
11 - 12		72	63	56			
12 - 13		66	58	74			
13 - 14		72	88	88			
14 - 15		120	131	130			
15 - 16		149	115	124			
16 - 17		100	111	109			
17 - 18	65	56	61	66			
18 - 19	51	43	56	38			
19 - 20	39	48	30	38			
20 - 21	38	35	32	29			
21 - 22	16	21	20	27			
22 - 23	16	15	22	28			
23 - 24	11	14	6	10			
Day Total		1227	1207	1260			

15-Minute Volumes

Time Start	Mon	Tue	Wed	Thu			
	Nov 23	Nov 24	Nov 25	Nov 26			
0:00		3	3	3			
0:15		0	1	3			
0:30		1	0	2			
0:45		1	2	2			
1:00		1	2	1			
1:15		0	1	1			
1:30		0	0	0			
1:45		0	0	0			
2:00		0	0	0			
2:15		1	1	1			
2:30		1	1	0			
2:45		1	0	0			
3:00		0	0	0			
3:15		0	0	0			
3:30		0	0	2			
3:45		1	1	1			
4:00		0	0	0			
4:15		0	0	0			
4:30		0	0	0			
4:45		1	0	0			
5:00		0	1	2			
5:15		5	0	1			
5:30		1	2	2			
5:45		2	2	2			
6:00		7	4	3			
6:15		7	3	5			
6:30		5	7	5			
6:45		2	6	9			
7:00		10	14	14			
7:15		27	27	25			
7:30		29	31	26			
7:45		22	20	12			
8:00		15	28	17			
8:15		57	50	60			
8:30		68	73	70			
8:45		29	26	43			
9:00		9	15	17			
9:15		15	11	21			
9:30		12	9	19			
9:45		16	20	12			
10:00		15	7	8			
10:15		16	15	22			
10:30		16	15	15			
10:45		20	16	17			
11:00		14	12	7			
11:15		13	19	11			
11:30		23	16	22			
11:45		22	16	16			
12:00			16	17	22		
12:15			16	11	13		
12:30			15	16	23		
12:45			19	14	16		
13:00			23	19	23		
13:15			14	27	25		
13:30			21	25	26		
13:45			14	17	14		
14:00			15	25	17		
14:15			23	16	15		
14:30			21	19	31		
14:45			61	71	67		
15:00			67	50	60		
15:15			26	26	28		
15:30			34	19	21		
15:45			22	20	15		
16:00			30	26	21		
16:15			32	32	35		
16:30			22	31	30		
16:45			16	22	23		
17:00	18	17	24	20			
17:15	17	14	15	22			
17:30	17	15	9	12			
17:45	13	10	13	12			
18:00	9	8	12	9			
18:15	14	12	11	14			
18:30	15	13	17	14			
18:45	13	10	16	1			
19:00	11	14	8	3			
19:15	9	12	9	7			
19:30	12	11	7	18			
19:45	7	11	6	10			
20:00	13	9	7	5			
20:15	8	7	9	10			
20:30	13	11	6	6			
20:45	4	8	10	8			
21:00	6	6	7	8			
21:15	4	7	7	8			
21:30	3	5	3	6			
21:45	3	3	3	5			
22:00	6	7	7	5			
22:15	3	5	6	12			
22:30	6	3	4	8			
22:45	1	0	5	3			
23:00	3	5	3	4			
23:15	2	4	1	3			
23:30	2	2	0	1			
23:45	4	3	2	2			



Site notes:

Edgelow St between Gordon Head Rd and Dawnview Cres (west)

Eastbound

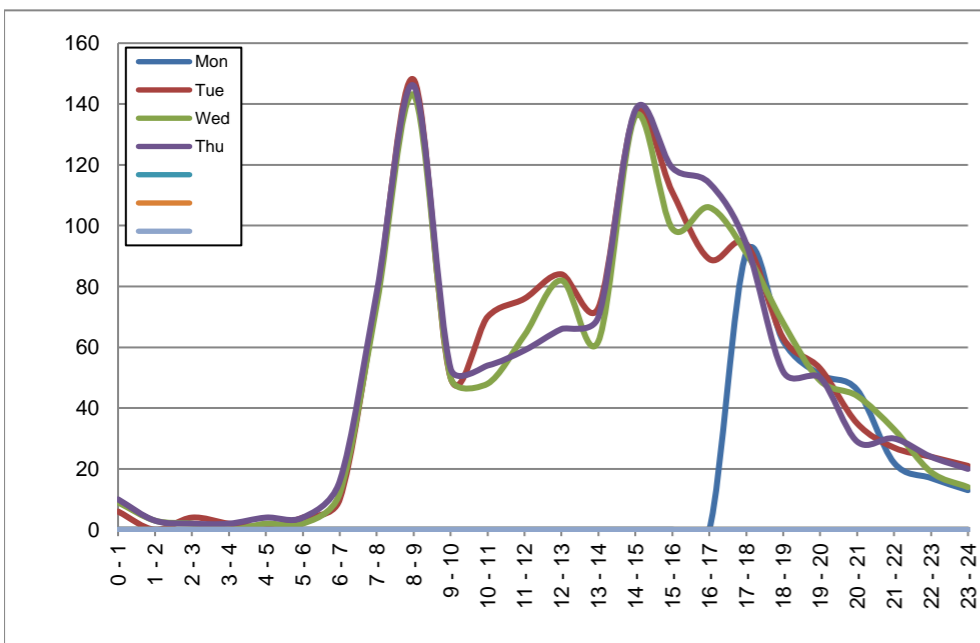
November 23, 2020 to November 26, 2020

Hourly Volumes

Time Period	Mon	Tue	Wed	Thu			
	Nov 23	Nov 24	Nov 25	Nov 26			
0 - 1		6	9	10			
1 - 2		0	3	3			
2 - 3		4	2	2			
3 - 4		2	0	2			
4 - 5		1	2	4			
5 - 6		4	2	4			
6 - 7		10	12	16			
7 - 8		76	74	78			
8 - 9		148	143	146			
9 - 10		50	50	53			
10 - 11		70	48	54			
11 - 12		76	64	59			
12 - 13		84	82	66			
13 - 14		73	62	70			
14 - 15		137	136	138			
15 - 16		111	99	119			
16 - 17		89	106	114			
17 - 18	91	94	91	94			
18 - 19	62	63	68	52			
19 - 20	51	53	49	50			
20 - 21	46	35	44	29			
21 - 22	22	27	33	30			
22 - 23	17	24	19	24			
23 - 24	13	21	14	20			
Day Total		1258	1212	1237			

15-Minute Volumes

Time Start	Mon	Tue	Wed	Thu				Time Start	Mon	Tue	Wed	Thu			
	Nov 23	Nov 24	Nov 25	Nov 26					Nov 23	Nov 24	Nov 25	Nov 26			
0:00		1	3	1				12:00		16	21	14			
0:15		1	1	4				12:15		22	20	18			
0:30		3	2	1				12:30		17	20	15			
0:45		1	3	4				12:45		29	21	19			
1:00		0	1	1				13:00		24	17	20			
1:15		0	2	0				13:15		12	16	20			
1:30		0	0	2				13:30		17	14	20			
1:45		0	0	0				13:45		20	15	10			
2:00		0	0	0				14:00		18	23	23			
2:15		0	1	2				14:15		26	33	26			
2:30		4	1	0				14:30		36	40	40			
2:45		0	0	0				14:45		57	40	49			
3:00		1	0	0				15:00		36	36	37			
3:15		1	0	1				15:15		33	23	24			
3:30		0	0	1				15:30		19	21	30			
3:45		0	0	0				15:45		23	19	28			
4:00		0	0	2				16:00		25	29	27			
4:15		1	0	0				16:15		23	30	25			
4:30		0	0	0				16:30		20	21	32			
4:45		0	2	2				16:45		21	26	30			
5:00		1	0	1				17:00	24	21	26	22			
5:15		0	0	2				17:15	29	28	23	22			
5:30		2	0	0				17:30	23	26	21	26			
5:45		1	2	1				17:45	15	19	21	24			
6:00		1	2	2				18:00	14	19	23	18			
6:15		3	1	2				18:15	18	18	18	15			
6:30		2	5	5				18:30	15	10	14	18			
6:45		4	4	7				18:45	15	16	13	1			
7:00		6	10	6				19:00	11	19	17	8			
7:15		25	21	30				19:15	16	11	7	15			
7:30		26	24	22				19:30	13	11	13	13			
7:45		19	19	20				19:45	11	12	12	14			
8:00		38	42	29				20:00	10	6	12	6			
8:15		50	43	44				20:15	10	12	9	5			
8:30		42	42	48				20:30	11	9	11	12			
8:45		18	16	25				20:45	15	8	12	6			
9:00		13	11	13				21:00	10	6	10	13			
9:15		11	17	13				21:15	3	8	12	6			
9:30		15	9	14				21:30	3	8	3	8			
9:45		11	13	13				21:45	6	5	8	3			
10:00		17	3	12				22:00	2	7	8	10			
10:15		19	15	13				22:15	8	9	6	5			
10:30		19	15	16				22:30	3	4	5	5			
10:45		15	15	13				22:45	4	4	0	4			
11:00		18	13	15				23:00	5	7	7	9			
11:15		16	16	14				23:15	1	5	3	3			
11:30		24	13	14				23:30	4	7	1	3			
11:45		18	22	16				23:45	3	2	3	5			



Site notes:

Vehicle Speed Summary

Saanich Engineering Department

Count Id: C0021-01

Filename: Edgelow St between Gordon Head Rd and Dawnview Cres (west)-Nov-2020.xlsm

Location: Edgelow St between Gordon Head Rd and Dawnview Cres (west)

Note:

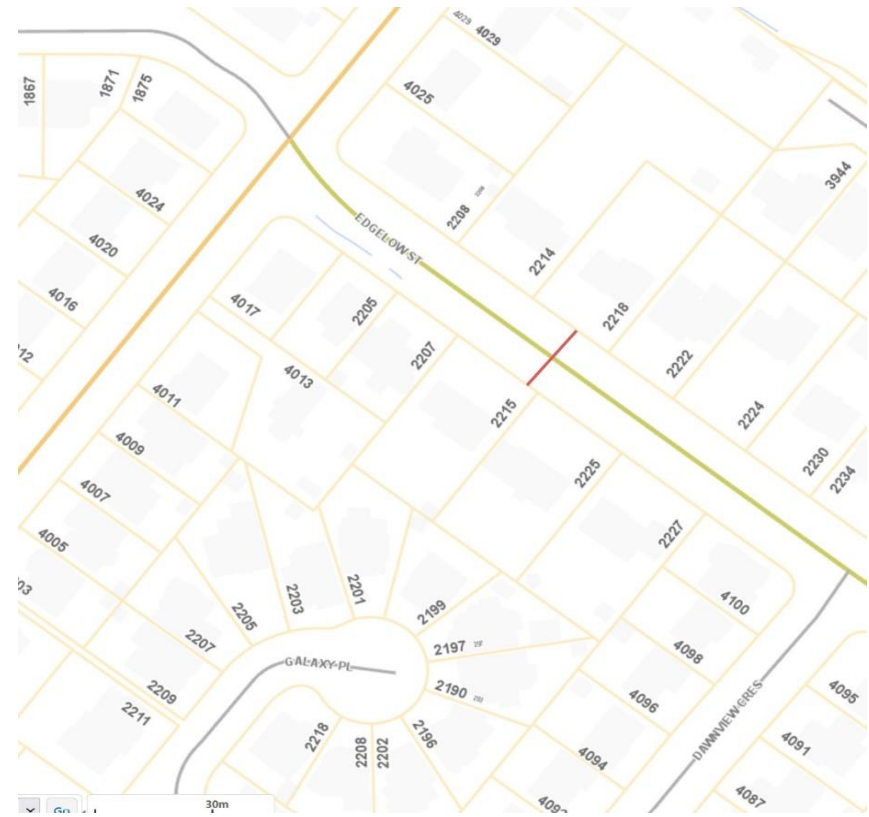
Direction: **East-West**

Dates: **November 23, 2020 To November 27, 2020**

Filtered data

AVG. SPEED	26 mph	42 km/h
50 % SPEED	27 mph	43 km/h
85 % SPEED	31 mph	49 km/h
95 % SPEED	34 mph	54 km/h

Location Map



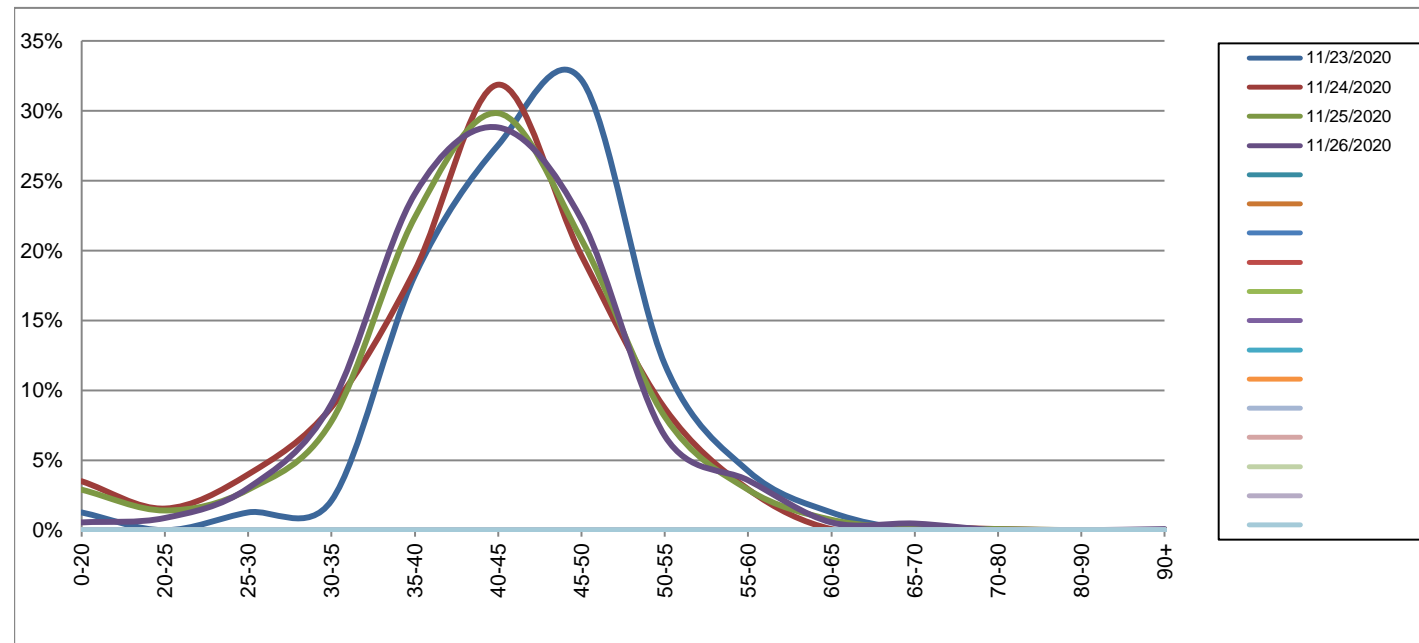
Edgelow St between Gordon Head Rd and Dawnview Cres (west)

Westbound
November 23, 2020 to November 26, 2020

Daily Speed Bin Percentages															Daily Speed Bin Volumes														Total	Avg.
Bin #	1	2	3	4	5	6	7	8	9	10	11	12	13	14	1	2	3	4	5	6	7	8	9	10	11	12	13	14	Volume	Speed
Bin Speeds	0-20	20-25	25-30	30-35	35-40	40-45	45-50	50-55	55-60	60-65	65-70	70-80	80-90	90+	0-20	20-25	25-30	30-35	35-40	40-45	45-50	50-55	55-60	60-65	65-70	70-80	80-90	90+		
11/23/2020	1.3%	0.0%	1.3%	2.1%	18.2%	27.5%	32.2%	11.9%	4.2%	1.3%	0.0%	0.0%	0.0%	0.0%	3	0	3	5	43	65	76	28	10	3	0	0	0	0	236	44
11/24/2020	3.5%	1.5%	4.0%	8.8%	18.6%	31.9%	19.6%	8.7%	2.9%	0.1%	0.2%	0.1%	0.0%	0.0%	43	19	49	108	228	391	241	107	36	1	3	1	0	0	1227	41
11/25/2020	2.9%	1.4%	2.9%	7.8%	22.4%	29.8%	20.8%	8.1%	2.9%	0.7%	0.2%	0.1%	0.0%	0.0%	35	17	35	94	270	360	251	98	35	9	2	1	0	0	1207	41
11/26/2020	0.6%	0.9%	3.0%	9.0%	24.0%	28.8%	22.2%	6.7%	3.6%	0.6%	0.5%	0.0%	0.0%	0.1%	7	11	38	114	303	363	280	85	45	7	6	0	0	1	1260	42
Total	2.2%	1.2%	3.2%	8.2%	21.5%	30.0%	21.6%	8.1%	3.2%	0.5%	0.3%	0.1%	0.0%	0.0%	88	47	125	321	844	1179	848	318	126	20	11	2	0	1	3930	42

Speed Data Summary

Bin #	1	2	3	4	5	6	7	8	9	10	11	12	13	14	Total
Bin Speeds	0-20	20-25	25-30	30-35	35-40	40-45	45-50	50-55	55-60	60-65	65-70	70-80	80-90	90+	
Survey Total	88	47	125	321	844	1179	848	318	126	20	11	2	0	1	3930
% Total	2.2%	1.2%	3.2%	8.2%	21.5%	30.0%	21.6%	8.1%	3.2%	0.5%	0.3%	0.1%	0.0%	0.0%	100%
Accumulated %	2.2%	3.4%	6.6%	14.8%	36.3%	66.3%	87.8%	95.9%	99.1%	99.6%	99.9%	100.0%	100.0%	100%	
Inverse Accum. %	97.8%	96.6%	93.4%	85.2%	63.7%	33.7%	12.2%	4.1%	0.9%	0.4%	0.1%	0.0%	0.0%	0.0%	
Average Speed	42 KM/H														



Site notes:

Edgelow St between Gordon Head Rd and Dawnview Cres (west)

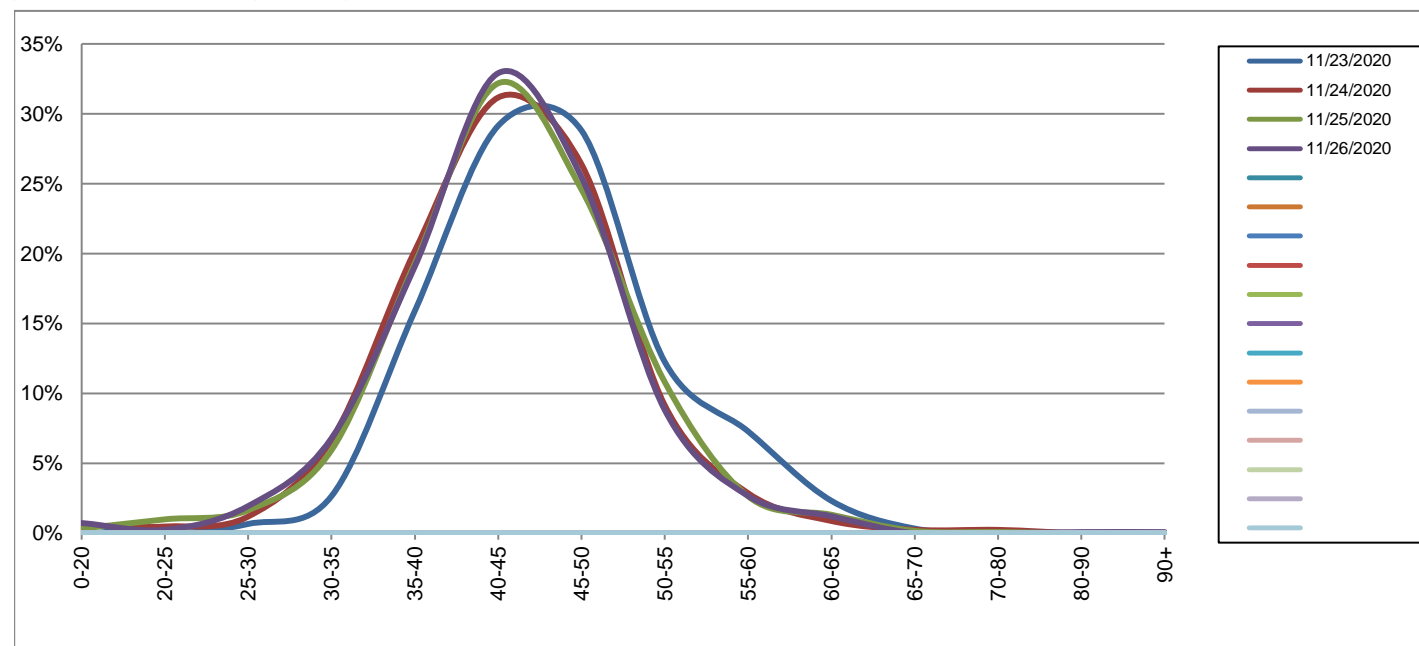
Eastbound

November 23, 2020 to November 26, 2020

Daily Speed Bin Percentages															Daily Speed Bin Volumes														Total	Avg.
Bin #	1	2	3	4	5	6	7	8	9	10	11	12	13	14	1	2	3	4	5	6	7	8	9	10	11	12	13	14	Volume	Speed
Bin Speeds	0-20	20-25	25-30	30-35	35-40	40-45	45-50	50-55	55-60	60-65	65-70	70-80	80-90	90+	0-20	20-25	25-30	30-35	35-40	40-45	45-50	50-55	55-60	60-65	65-70	70-80	80-90	90+		
11/23/2020	0.7%	0.0%	0.7%	2.6%	15.9%	29.1%	28.8%	12.3%	7.3%	2.3%	0.3%	0.0%	0.0%	0.0%	2	0	2	8	48	88	87	37	22	7	1	0	0	0	302	45
11/24/2020	0.6%	0.5%	1.2%	6.7%	20.2%	31.2%	26.4%	9.1%	2.9%	0.9%	0.2%	0.2%	0.0%	0.0%	7	6	15	84	254	392	332	115	36	11	3	3	0	0	1258	43
11/25/2020	0.3%	1.0%	1.7%	5.9%	19.3%	32.2%	24.6%	10.8%	2.6%	1.3%	0.2%	0.1%	0.0%	0.0%	4	12	20	72	234	390	298	131	32	16	2	1	0	0	1212	43
11/26/2020	0.7%	0.2%	1.9%	6.8%	19.1%	32.9%	25.5%	8.8%	2.7%	1.2%	0.0%	0.0%	0.1%	0.1%	9	3	24	84	236	407	315	109	33	15	0	0	1	1	1237	43
Total	0.5%	0.5%	1.5%	6.2%	19.3%	31.9%	25.7%	9.8%	3.1%	1.2%	0.1%	0.1%	0.0%	0.0%	22	21	61	248	772	1277	1032	392	123	49	6	4	1	1	4009	43

Speed Data Summary

Bin #	1	2	3	4	5	6	7	8	9	10	11	12	13	14	Total
Bin Speeds	0-20	20-25	25-30	30-35	35-40	40-45	45-50	50-55	55-60	60-65	65-70	70-80	80-90	90+	
Survey Total	22	21	61	248	772	1277	1032	392	123	49	6	4	1	1	4009
% Total	0.5%	0.5%	1.5%	6.2%	19.3%	31.9%	25.7%	9.8%	3.1%	1.2%	0.1%	0.1%	0.0%	0.0%	100%
Accumulated %	0.5%	1.1%	2.6%	8.8%	28.0%	59.9%	85.6%	95.4%	98.5%	99.7%	99.9%	100.0%	100.0%	100%	
Inverse Accum. %	99.5%	98.9%	97.4%	91.2%	72.0%	40.1%	14.4%	4.6%	1.5%	0.3%	0.1%	0.0%	0.0%	0.0%	
Average Speed	43 KM/H														



Site notes:

Edgelow St between Gordon Head Rd and Dawnview Cres (west)

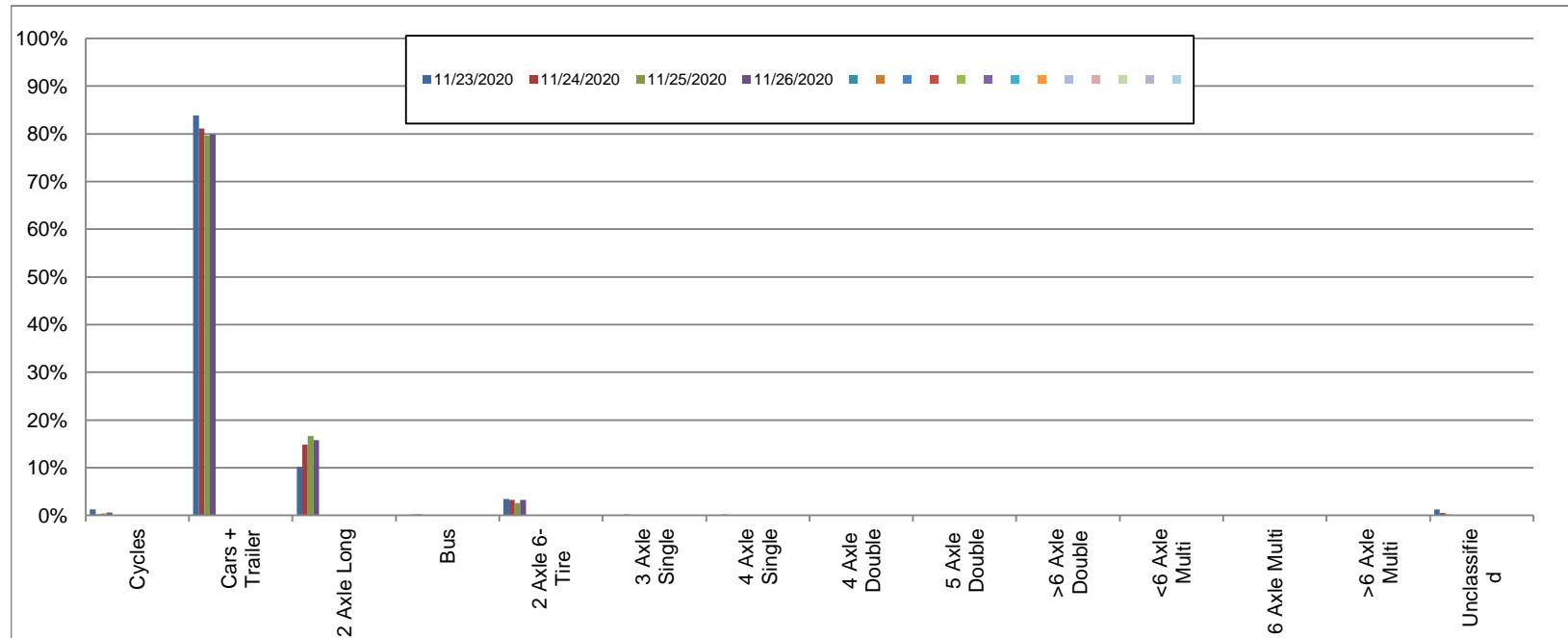
Westbound

November 23, 2020 to November 26, 2020

Daily Class Bin Percentages															Daily Class Bin Volumes															
Bin #	1	2	3	4	5	6	7	8	9	10	11	12	13	14	1	2	3	4	5	6	7	8	9	10	11	12	13	14	Total Volume	
Bin Class	Cycles	Cars + Trailer	2 Axle Long	Bus	2 Axle 6-Tire	3 Axle Single	4 Axle Single	4 Axle Double	5 Axle Double	>6 Axle Double	<6 Axle Multi	6 Axle Multi	>6 Axle Multi	Unclassified	Cycles	Cars + Trailer	2 Axle Long	Bus	2 Axle 6-Tire	3 Axle Single	4 Axle Single	4 Axle Double	5 Axle Double	>6 Axle Double	<6 Axle Multi	6 Axle Multi	>6 Axle Multi	Unclassified		
11/23/2020	1.3%	83.9%	10.2%	0.0%	3.4%	0.0%	0.0%	0.0%	0.0%	0.0%	0.0%	0.0%	0.0%	1.3%	3	198	24	0	8	0	0	0	0	0	0	0	0	0	3	236
11/24/2020	0.2%	81.1%	14.8%	0.0%	3.3%	0.1%	0.0%	0.0%	0.0%	0.0%	0.0%	0.0%	0.0%	0.5%	3	995	182	0	40	1	0	0	0	0	0	0	0	0	6	1227
11/25/2020	0.4%	79.7%	16.7%	0.2%	2.6%	0.1%	0.2%	0.1%	0.0%	0.0%	0.0%	0.0%	0.0%	0.2%	5	962	201	2	31	1	2	1	0	0	0	0	0	2	1207	
11/26/2020	0.6%	79.8%	15.8%	0.2%	3.3%	0.2%	0.0%	0.1%	0.1%	0.0%	0.0%	0.0%	0.0%	0.0%	7	1006	199	3	41	2	0	1	1	0	0	0	0	0	1260	
Total	0.5%	80.4%	15.4%	0.1%	3.1%	0.1%	0.1%	0.1%	0.0%	0.0%	0.0%	0.0%	0.0%	0.3%	18	3161	606	5	120	4	2	2	1	0	0	0	0	11	3930	

Class Data Summary

Bin #	1	2	3	4	5	6	7	8	9	10	11	12	13	14	Total Volume
Bin Class	Cycles	Cars + Trailer	2 Axle Long	Bus	2 Axle 6-Tire	3 Axle Single	4 Axle Single	4 Axle Double	5 Axle Double	>6 Axle Double	<6 Axle Multi	6 Axle Multi	>6 Axle Multi	Unclassified	Total Volume
Survey Total	18	3161	606	5	120	4	2	2	1	0	0	0	0	11	3930
% Total	0.5%	80.4%	15.4%	0.1%	3.1%	0.1%	0.1%	0.1%	0.0%	0.0%	0.0%	0.0%	0.0%	0.3%	100%
Accumulated %	0.5%	80.9%	96.3%	96.4%	99.5%	99.6%	99.6%	99.7%	99.7%	99.7%	99.7%	99.7%	99.7%	100.0%	
Inv. Accum. %	99.5%	19.1%	3.7%	3.6%	0.5%	0.4%	0.4%	0.3%	0.3%	0.3%	0.3%	0.3%	0.0%		



Classification Descriptions

Bin #	Bin Description
1	Motorcycles
2	Passenger cars, including those with recreational trailers
3	2-axle pick-ups, vans, and RVs, including those with recreational trailers
4	Buses
5	2-axle, 6-tire single units
6	3-axle single units
7	4-axle single units
8	3-axle or 4-axle double unit
9	5-axle double unit
10	6-, 7-, or 8-axle double unit
11	5-axle multiple unit
12	6-axle multiple unit
13	7-or-more-axle multiple unit
14	Vehicles that could not be classified

Site notes:

Edgelow St between Gordon Head Rd and Dawnview Cres (west)

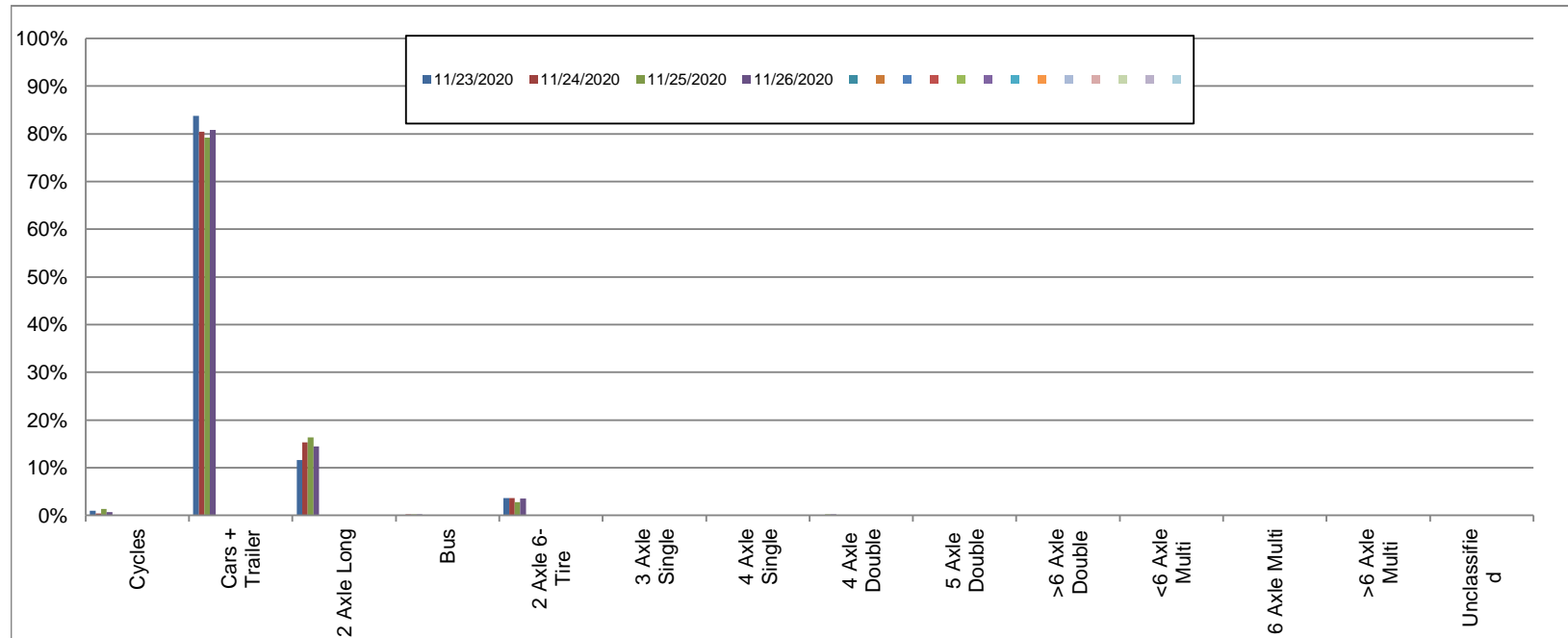
Eastbound

November 23, 2020 to November 26, 2020

Daily Class Bin Percentages															Daily Class Bin Volumes															
Bin #	1	2	3	4	5	6	7	8	9	10	11	12	13	14	1	2	3	4	5	6	7	8	9	10	11	12	13	14	Total Volume	
Bin Class	Cycles	Cars + Trailer	2 Axle Long	Bus	2 Axle 6-Tire	3 Axle Single	4 Axle Single	4 Axle Double	5 Axle Double	>6 Axle Double	<6 Axle Multi	6 Axle Multi	>6 Axle Multi	Unclassified	Cycles	Cars + Trailer	2 Axle Long	Bus	2 Axle 6-Tire	3 Axle Single	4 Axle Single	4 Axle Double	5 Axle Double	>6 Axle Double	<6 Axle Multi	6 Axle Multi	>6 Axle Multi	Unclassified		
11/23/2020	1.0%	83.8%	11.6%	0.0%	3.6%	0.0%	0.0%	0.0%	0.0%	0.0%	0.0%	0.0%	0.0%	0.0%	3	253	35	0	11	0	0	0	0	0	0	0	0	0	0	302
11/24/2020	0.4%	80.4%	15.3%	0.2%	3.6%	0.0%	0.0%	0.0%	0.0%	0.0%	0.0%	0.0%	0.0%	0.1%	5	1012	193	2	45	0	0	0	0	0	0	0	0	0	1	1258
11/25/2020	1.3%	79.2%	16.3%	0.2%	2.7%	0.0%	0.1%	0.2%	0.0%	0.0%	0.0%	0.0%	0.0%	0.0%	16	960	198	2	33	0	1	2	0	0	0	0	0	0	0	1212
11/26/2020	0.6%	80.8%	14.5%	0.2%	3.6%	0.0%	0.0%	0.2%	0.0%	0.0%	0.0%	0.0%	0.0%	0.1%	8	1000	179	3	44	0	0	2	0	0	0	0	0	1	1237	
Total	0.8%	80.4%	15.1%	0.2%	3.3%	0.0%	0.0%	0.1%	0.0%	0.0%	0.0%	0.0%	0.0%	0.0%	32	3225	605	7	133	0	1	4	0	0	0	0	0	2	4009	

Class Data Summary

Bin #	1	2	3	4	5	6	7	8	9	10	11	12	13	14	Total Volume
Bin Class	Cycles	Cars + Trailer	2 Axle Long	Bus	2 Axle 6-Tire	3 Axle Single	4 Axle Single	4 Axle Double	5 Axle Double	>6 Axle Double	<6 Axle Multi	6 Axle Multi	>6 Axle Multi	Unclassified	Total Volume
Survey Total	32	3225	605	7	133	0	1	4	0	0	0	0	0	2	4009
% Total	0.8%	80.4%	15.1%	0.2%	3.3%	0.0%	0.0%	0.1%	0.0%	0.0%	0.0%	0.0%	0.0%	0.0%	100%
Accumulated %	0.8%	81.2%	96.3%	96.5%	99.8%	99.8%	99.9%	100.0%	100.0%	100.0%	100.0%	100.0%	100.0%	100.0%	
Inv. Accum. %	99.2%	18.8%	3.7%	3.5%	0.2%	0.2%	0.1%	0.0%	0.0%	0.0%	0.0%	0.0%	0.0%	0.0%	



Classification Descriptions

Bin #	Bin Description
1	Motorcycles
2	Passenger cars, including those with recreational trailers
3	2-axle pick-ups, vans, and RVs, including those with recreational trailers
4	Buses
5	2-axle, 6-tire single units
6	3-axle single units
7	4-axle single units
8	3-axle or 4-axle double unit
9	5-axle double unit
10	6-, 7-, or 8-axle double unit
11	5-axle multiple unit
12	6-axle multiple unit
13	7-or-more-axle multiple unit
14	Vehicles that could not be classified

Site notes: